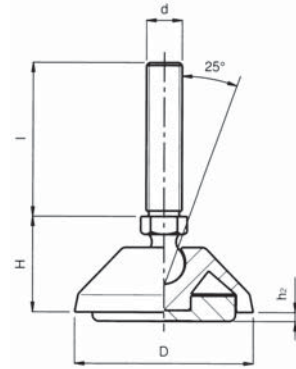


## Adjustable Levelling Feet



**Material:**

Reinforced P.A.6, black with treated stud.  
 Rubber NBR 70 Shore A.  
 Maximum static load: 10.000 N (vertical stud)  
 Also available with stainless steel stud  
 AISI 304 on request



Order No. Without rubber	Order No. With rubber	D	H	d	l	h <sub>2</sub>
1189 03 851	1189 03 801	32	13	M8	45	2
1189 03 852	1189 03 802	32	13	M8	70	2
1189 03 853	1189 03 803	32	13	M10	45	2
1189 03 854	1189 03 804	32	13	M10	70	2
1189 04 851	1189 04 801	40	22	M8	45	3
1189 04 852	1189 04 802	40	22	M8	70	3
1189 04 853	1189 04 803	40	22	M10	45	3
1189 04 854	1189 04 804	40	22	M10	70	3
1189 05 856	1189 05 805	50	27	M8	45	2
1189 05 857	1189 05 806	50	27	M8	70	2
1189 05 851	1189 05 801	50	27	M10	45	2
1189 05 852	1189 05 802	50	27	M10	70	2
1189 05 853	1189 05 803	50	27	M12	45	2
1189 05 854	1189 05 804	50	27	M12	70	2
1189 08 861	1189 08 808	80	27	M8	45	2

Order No. Without rubber	Order No. With rubber	D	H	d	l	h <sub>2</sub>
1189 08 862	1189 08 809	80	27	M8	70	2
1189 08 853	1189 08 803	80	27	M10	45	2
1189 08 854	1189 08 804	80	27	M10	70	2
1189 08 851	1189 08 801	80	27	M12	45	2
1189 08 852	1189 08 802	80	27	M12	70	2
1189 08 863	1189 08 810	80	27	M14	70	2
1189 08 864	1189 08 811	80	27	M14	120	2
1189 08 855	1189 08 805	80	27	M16	70	2
1189 08 856	1189 08 806	80	27	M16	120	2
1189 08 857	1189 08 807	80	27	M20	100	2

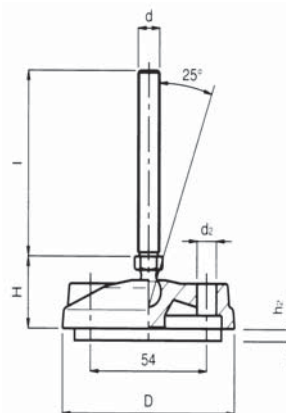
MACHINE ACCESSORIES

## Adjustable Levelling Feet with through Holes



**Material:**

Reinforced P.A.6, black with treated stud. Rubber NBR 70 Shore A.  
 Maximum static load: 10.000 N (vertical stud)  
 Also available with stainless steel stud AISI 304 on request



Order No. Without rubber	Order No. With rubber	D	H	d	l	h <sub>2</sub>	d <sub>2</sub>
1190 08 858	1190 08 808	80	27	M8	45	2	9
1190 08 859	1190 08 809	80	27	M8	70	2	9
1190 08 853	1190 08 803	80	27	M10	45	2	9
1190 08 854	1190 08 804	80	27	M10	70	2	9
1190 08 851	1190 08 801	80	27	M12	45	2	9
1190 08 852	1190 08 802	80	27	M12	70	2	9
1190 08 860	1190 08 810	80	27	M14	70	2	9
1190 08 861	1190 08 811	80	27	M14	120	2	9
1190 08 855	1190 08 805	80	27	M16	70	2	9
1190 08 856	1190 08 806	80	27	M16	120	2	9
1190 08 857	1190 08 807	80	27	M20	100	2	9