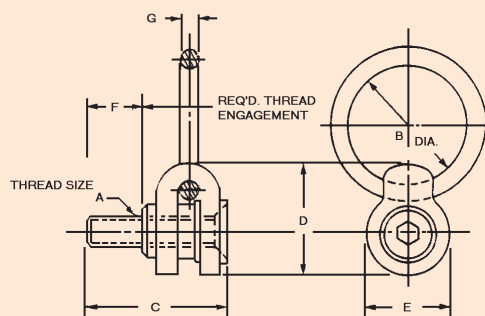




# Side Pull Style - HOIST RINGS

- Convenient Part Handling
- Rated at 5:1 strength factor
- Bushing: Zinc plated silver passivate
- Material: Alloy Steel
- Clevis, Ring, Bushing and Cap Screw are magnetic particle inspected
- Available with Envirolox Protective Finish upon request.
- Clevis is x-rayed
- Finish: Black Oxide
- Proof Tested to 200% of Rated Load Capacity
- All products are CE marked



## Metric Side-Pull Hoist Rings

| PART NUMBER | LOAD <sup>1</sup> CAPACITY (Kg) | A           | B     | C     | D     | E     | F    | G    | THREAD <sup>2</sup> TORQUE (Kg m.) | WT. (Kg) |
|-------------|---------------------------------|-------------|-------|-------|-------|-------|------|------|------------------------------------|----------|
| 47351       | 325                             | M 8 X 1.25  | 50.8  | 61    | 50.8  | 38.1  | 16   | 9.5  | 0.43                               | 0.12     |
| 47352       | 500                             | M 10 X 1.50 | 50.8  | 63    | 50.8  | 38.1  | 20   | 9.5  | 0.60                               | 0.12     |
| 47353       | 725                             | M 12 X 1.75 | 76.2  | 85    | 81    | 60.3  | 24   | 15.9 | 2.00                               | 1.47     |
| 47354       | 1400                            | M 16 X 2.0  | 76.2  | 94    | 81    | 60.3  | 31   | 15.9 | 3.50                               | 1.47     |
| 47355       | 2290                            | M 20 X 2.5  | 101.6 | 133   | 125.4 | 95.3  | 40   | 25.4 | 7.00                               | 5.10     |
| 47356       | 3050                            | M 24 X 3.0  | 101.6 | 147   | 125.4 | 95.3  | 47   | 25.4 | 12.50                              | 5.22     |
| 47357       | 4850                            | M 30 X 3.5  | 127.0 | 173.8 | 173.0 | 117.5 | 43.6 | 31.7 | 34.6                               | 12.61    |

## Replacement Bolts

| PART NUMBER | THREAD SIZE | WT. (Kg) |
|-------------|-------------|----------|
| 47391       | M 8         | 0.02     |
| 47392       | M 10        | 0.03     |
| 47393       | M 12        | 0.07     |
| 47394       | M 16        | 0.14     |
| 47395       | M 20        | 0.32     |
| 47396       | M 24        | 0.53     |
| 47397       | M 30        | 1.03     |

All dimensions are in millimetres.

<sup>1</sup> Stated load capacity is based upon specific thread torques shown in charts.

<sup>2</sup> It is recommended that these torques be used when installing hoist rings.

## The Envirolox™ Protective Finish

The Envirolox™ Protective Finish is a *proprietary coating that helps to prevent rusting and other environmental hazards from affecting the Hoist Rings*. This coating is *environmentally friendly* and is proven to be *effective in extreme conditions*. Envirolox Protective Finish is available as a standard on Centre-Pull Style Hoist Rings. It is also available on the Side-Pull Style Hoist Rings upon special request. It is not recommended for the Swivel Eyebolt or the SP 2000 products.

- Available as standard on Centre-Pull Style Hoist Rings
- Available upon request for Side-Pull Style
- Prevents rusting
- Environmentally safe

