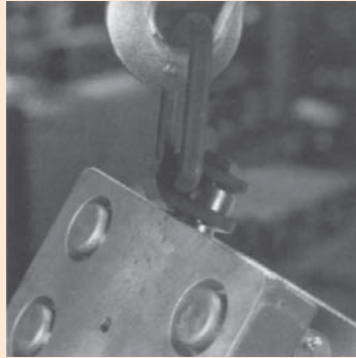


HOIST RINGS - Side Pull 2000 Style



The SP2000 Side-Pull Style Hoist Ring is ideal for flipping fixtures, dies and moulds. The hoist ring is low profile and has a unique bolt retention design. The oversized forged bale easily adapts to larger hoist hooks. Its relatively light weight makes it easier to handle than similar hoist rings and the installation is conveniently done with external wrenching (47581, 47582) or internal/external wrenching (all other sizes). All parts are made in the USA.

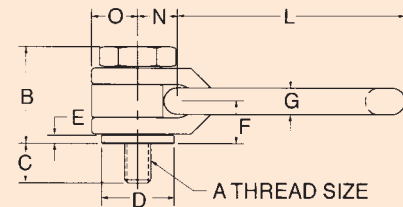
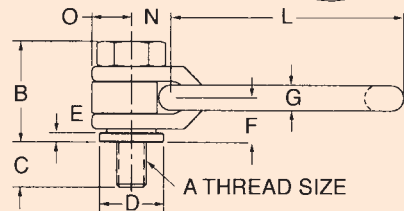
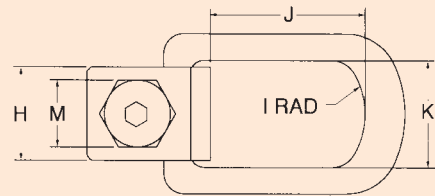
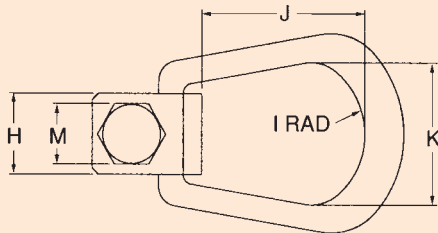
- Can be used for top lifts
- Full swivel and pivot action
- Rated at 5:1 strength factor
- All products are CE marked
- Material: Alloy Steel
- Finish: Black Oxide
- Proof Tested to 200% of Rated Load Capacity



SIDE PULL APPLICATION



TOP PULL APPLICATION



47581
47582

EXTERNAL WRENCH MOUNTING

47583
47584
47585
47586
47587
47588
47589

INTERNAL/EXTERNAL WRENCH MOUNTING

Metric SP2000 Side-Pull Hoist Rings

PART NUMBER (Kg)	LOAD CAPACITY	THREAD SIZE															HEX SIZE	WT. (Kg)
		A	B	C	D	E	F	G	H	I	J	K	L	M	N	O		
47581	325	M 8 X 1.25	33	16	21	3	14	8	25	25	52	44	76	19	13	13	—	.25
47582	500	M 10 X 1.5	33	20	21	3	14	8	25	25	52	44	76	19	13	13	—	.25
47583	725	M 12 X 1.75	48	24	35	4	21	13	44	38	75	51	110	32	19	22	6	1
47584	1400	M 16 X 2	48	32	35	4	21	13	44	38	75	51	110	32	19	22	8	1
47585	2290	M 20 X 2.5	59	40	48	6	26	16	57	51	102	67	145	44	25	29	10	2
47586	3050	M 24 X 3	59	48	48	6	26	16	57	51	102	67	145	44	25	29	12	2
47587	4850	M 30 X 3.5	90	60	83	9	42	27	95	76	196	111	265	76	49	48	19	9
47588	7500	M36 X 4	90	72	83	9	42	27	95	76	196	111	265	76	49	48	19	9
47589	10000	M48 X 5	90	96	83	9	42	27	95	76	196	111	265	76	49	48	19	10