



PNEUMATIC SWING CLAMPS

- Extensive range of pneumatic clamps to suit most applications
- Range now includes new swing clamps
- Valve accessory kits available for trouble free installation
- Two handed safety control unit available

PNEUMATIC SWING CLAMPS

PNEUMATIC SWING CLAMP

MODELS **PNS20-10C** (clockwise)

PNS20-10A (anti-clockwise)



Options:

SK/7 Stroke sensing kit.
PNFM02 Base mounting flange.
Pneumatic operating valves & fittings.
PN Kit T1 Toggle valve kit.
PN Kit S1 Solenoid valve kit.
PN FR1 Filter regulator kit.
PNSS1 Pneumatic two hand safety start control.

Maximum holding force:

20 daN.

Operating pressure range:

2-10 bar.

Rotary stroke:

9.5mm.

Clamping stroke:

10mm.

Swept volume per cycle:

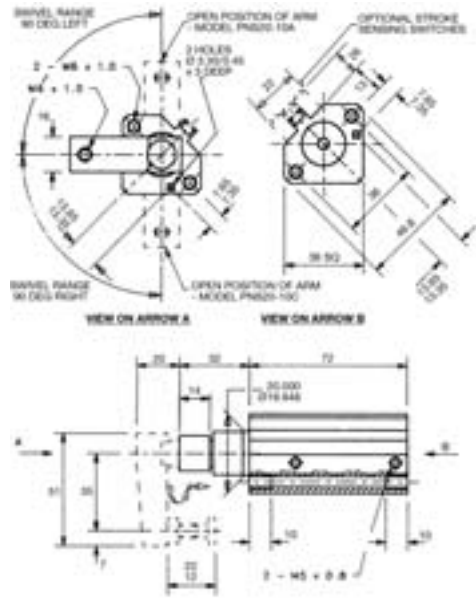
0.01 L.

Weight:

0.35 Kg.

Supplied complete with:

Arm, spindle & nut.



PNEUMATIC SWING CLAMP

MODELS **PNS32-10C** (clockwise)

PNS32-10A (anti-clockwise)



Options:

SK/8 Stroke sensing kit.
PNFM03 Base mounting flange.
Pneumatic operating valves & fittings.
PN Kit T2 Toggle valve kit.
PN Kit S2 Solenoid valve kit.
PN FR1 Filter regulator kit.
PNSS1 Pneumatic two hand safety start control.

Maximum holding force:

60 daN.

Operating pressure range:

2-10 bar.

Rotary stroke:

15mm.

Clamping stroke:

10mm.

Swept volume per cycle:

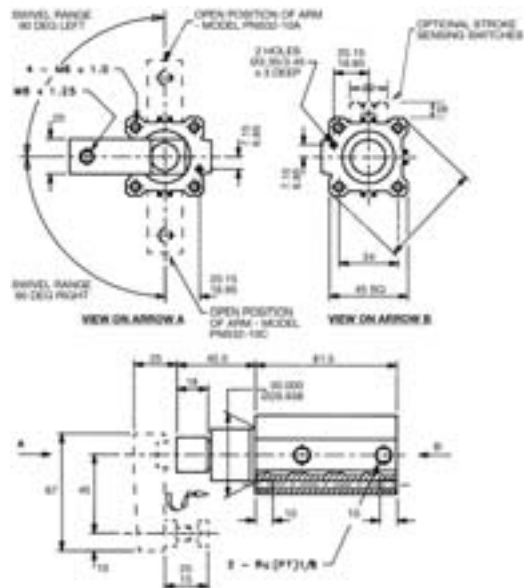
0.035 L.

Weight:

0.7 Kg.

Supplied complete with:

Arm, spindle & nut.



PNEUMATIC SWING CLAMP

MODELS **PNS40-20C** (clockwise)

PNS40-20A (anti-clockwise)



Options:

SK/8 Stroke sensing kit.
PNFM04 Base mounting flange.
Pneumatic operating valves & fittings.
PN Kit T2 Toggle valve kit.
PN Kit S2 Solenoid valve kit.
PN FR1 Filter regulator kit.
PNSS1 Pneumatic two hand safety start control.

Maximum holding force:

105 daN.

Operating pressure range:

2-10 bar.

Rotary stroke:

15mm.

Clamping stroke:

20mm.

Swept volume per cycle:

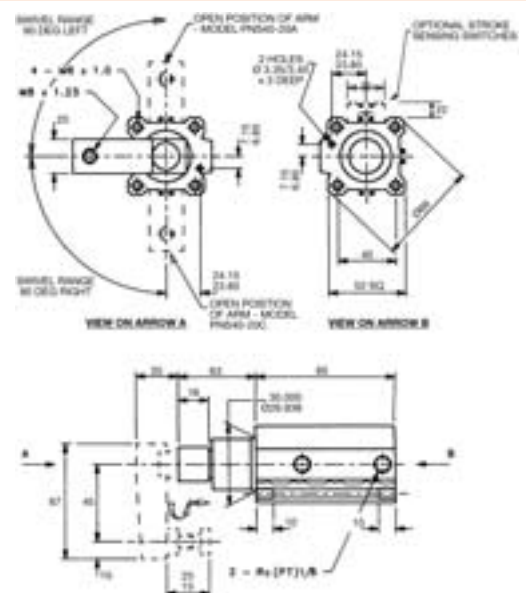
0.06 L.

Weight:

0.84 Kg.

Supplied complete with:

Arm, spindle & nut.



PNEUMATIC SWING CLAMPS

PNEUMATIC SWING CLAMP

MODELS **PNS50-20C** (clockwise)

PNS50-20A (anti-clockwise)



Maximum holding force:
160 daN.

Operating pressure range:
2-10 bar.

Rotary stroke:
19mm.

Clamping stroke:
20mm.

Swept volume per cycle:
0.14 L.

Weight:
1.45 Kg.

Supplied complete with:
Arm, spindle & nut.

Options:

SK/8 Stroke sensing kit.
PNFM05 Base mounting flange.
Pneumatic operating valves & fittings.
PN Kit T3 Toggle valve kit.
PN Kit S3 Solenoid valve kit.
PN FR1 Filter regulator kit.
PNSS1 Pneumatic two hand safety start control.

