

PUSH-PULL CLAMPS

'SLIMLINE' PUSH-PULL CLAMPS

MODEL P750



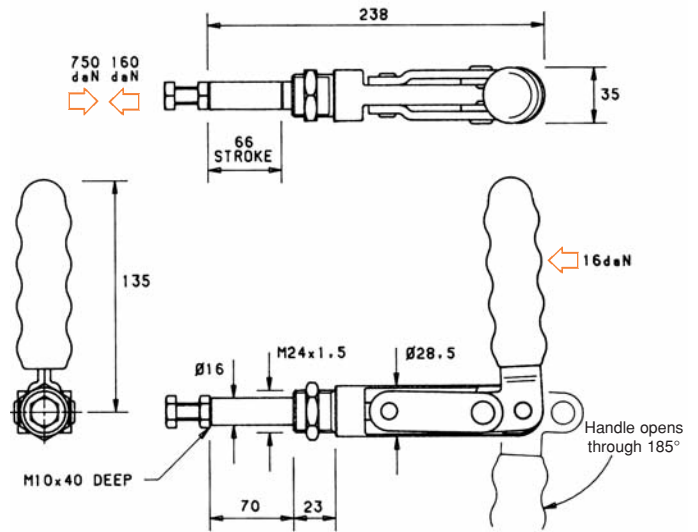
Plunger:
Locks at both extended & retracted ends of the stroke.

Base:
Nose mounting.

Nominal Holding Force:
750 daN

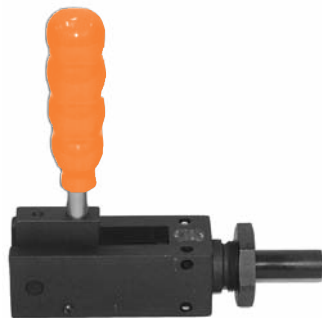
Weight:
1.00 Kg

Supplied complete with:
MB1050 Setscrew & nut.
See "Accessories" for FM24 Mounting Bracket & other items.



'PRECISION' PUSH-PULL CLAMP

MODEL SP700



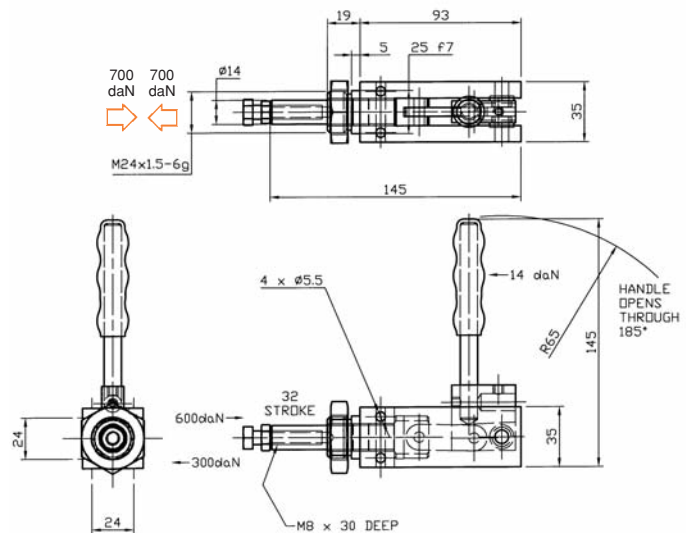
Plunger:
Ground steel precision self-locking at forward stroke position.

Base:
Carbon steel precision machined, nose mounting or body mounting.

Nominal Holding Force:
700 daN

Weight:
0.83 Kg

Supplied complete with:
MB0840 setscrew & nuts.



'PRECISION' PUSH-PULL CLAMP

MODEL P1150

P2250

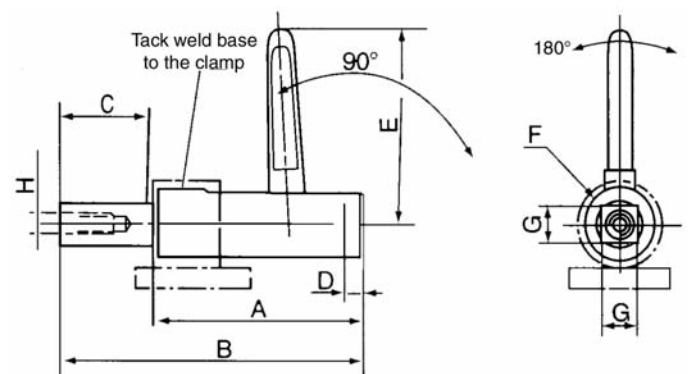


Piston:
Locks at the extended end of the stroke.

Base:
Fixed by using accessories overleaf.

Holding Force:
P1150 - 1 150 daN
P2250 - 2 250 daN

Weight:
P1150 - 1,150Kg
P2250 - 1,850Kg



MODEL	A	B	C	D	E	F	G	H
P1150	108	159	46	10	112	35	19	M12
P2250	141	212.5	55	14	127	45	24.8	M16