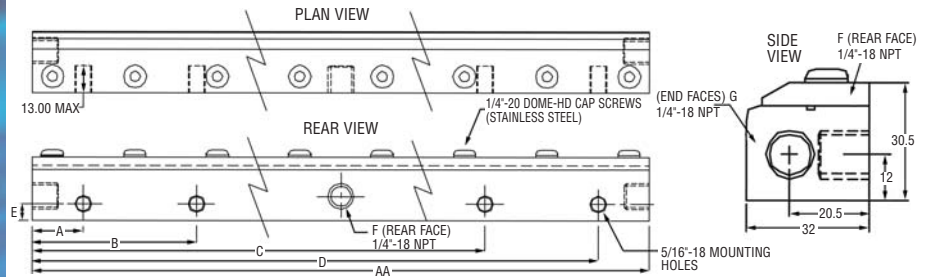
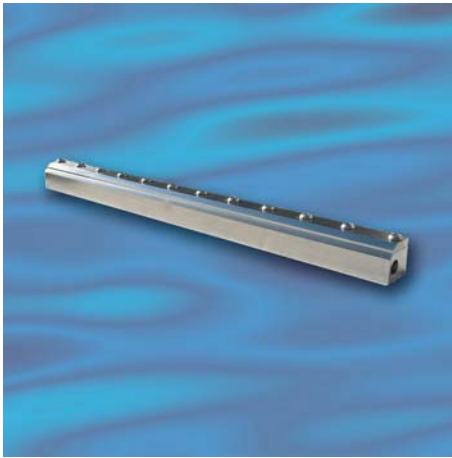


## SE900 ALUMINIUM STRIP AIRMOVER



PART NO. (Stainless Steel)	AA	A	B	C	D	E	F # of Rear Inlets	G # of Side Inlets
Model SE900	36" 914mm	1.4" 35mm	10.9" 277mm	26.9" 683.5mm	34.6" 879mm	0.3" 8mm	2	2

**Material:** Aluminium/Zinc.

**Weight:** 4.3Kg

**Standard Gap:** 0.05-0.10mm

**dB(A) at:** 5.5 bar is 80

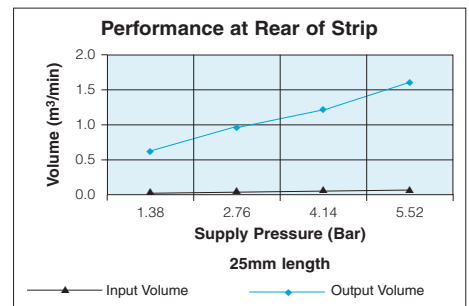
**Shims:** Not Applicable

**Standard Inlet Threads:** G $\frac{1}{4}$

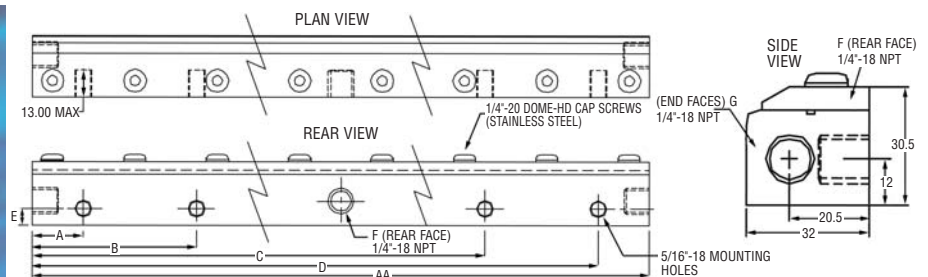
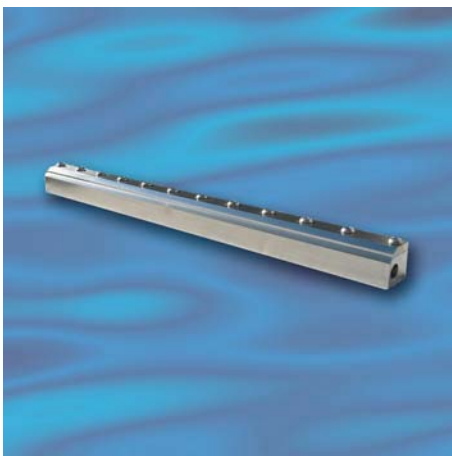
**Options:**  $\frac{1}{4}$ " NPT  
Please specify on order  $\frac{1}{4}$ " NPTF

Bar	Vol in m <sup>3</sup> /min	Vol out m <sup>3</sup> /min
1.38	0.034	0.651
2.76	0.054	0.963
4.14	0.074	1.218
5.52	0.093	1.642

per 25mm length



## SE75SS STAINLESS STEEL STRIP AIRMOVER



PART NO. (Stainless Steel)	AA	A	B	C	D	E	F # of Rear Inlets	G # of Side Inlets
Model SE75SS	3" 76mm	0.6" 16mm	-	-	2.4" 60mm	0.3" 8mm	1	2

**Material:** Stainless Steel (Grade 304)

**Weight:** 0.37

**Standard Gap:** 0.05-0.10mm

**dB(A) at:** 5.5 bar is 80

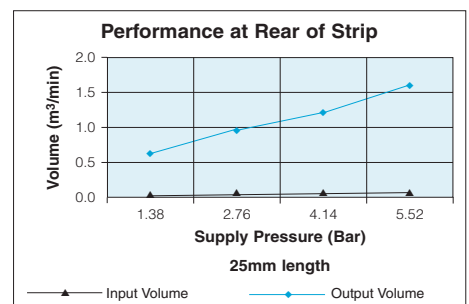
**Shims:** Not Applicable

**Standard Inlet Threads:** G $\frac{1}{4}$

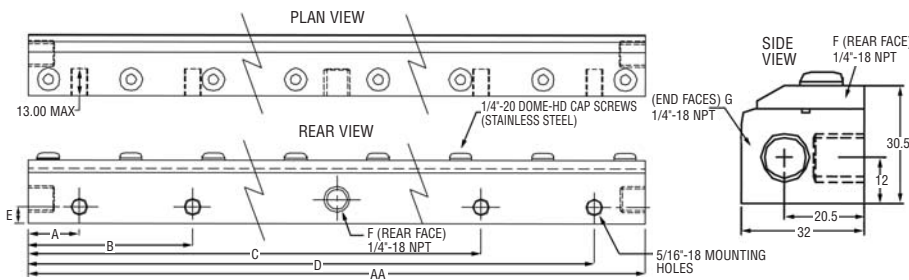
**Options:**  $\frac{1}{4}$ " NPT  
Please specify on order  $\frac{1}{4}$ " NPTF

Bar	Vol in m <sup>3</sup> /min	Vol out m <sup>3</sup> /min
1.38	0.034	0.651
2.76	0.054	0.963
4.14	0.074	1.218
5.52	0.093	1.642

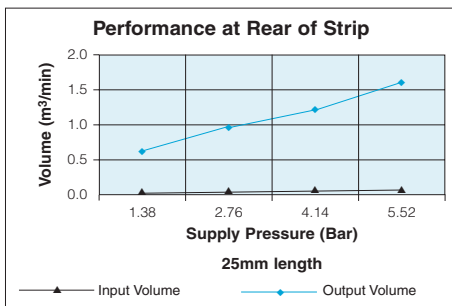
per 25mm length



## STAINLESS STEEL STRIP AIRMOVER SE150SS



PART NO. (Stainless Steel)	AA	A	B	C	D	E	F # of Rear Inlets	G # of Side Inlets
Model SE150SS	6" 150mm	1.2" 30mm	-	-	4.7" 120mm	0.3" 8mm	1	2



Bar	Vol in m³/min	Vol out m³/min
1.38	0.034	0.651
2.76	0.054	0.963
4.14	0.074	1.218
5.52	0.093	1.642

per 25mm length

**Material:** Stainless Steel (Grade 304)

**Weight:** 0.75Kg

**Standard Gap:** 0.05-0.10mm

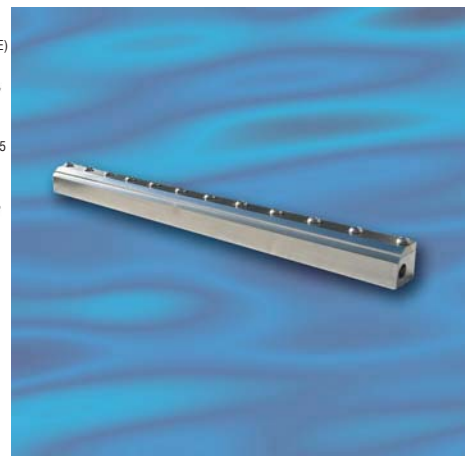
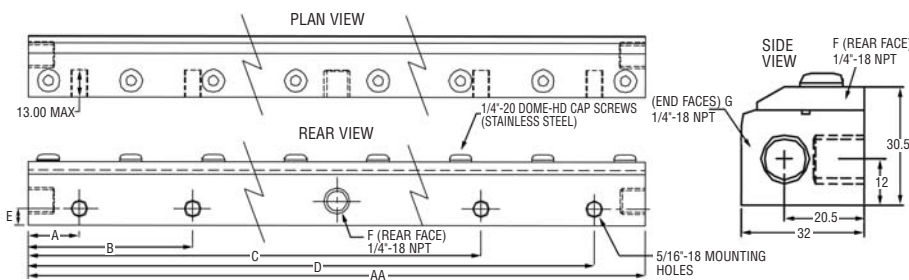
**dB(A) at:** 5.5 bar is 80

**Shims:** Not Applicable

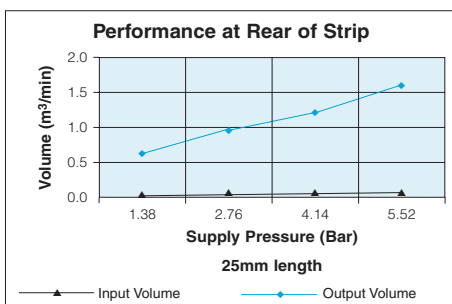
**Standard Inlet Threads:** G $\frac{1}{4}$

**Options:**  $\frac{1}{4}$ " NPT  
Please specify on order  $\frac{1}{4}$ " NPTF

## STAINLESS STEEL STRIP AIRMOVER SE300SS



PART NO. (Stainless Steel)	AA	A	B	C	D	E	F # of Rear Inlets	G # of Side Inlets
Model SE300SS	12" 300mm	1.0" 25mm	3.1" 8.0mm	8.7" 220mm	10.8" 275mm	0.3" 8mm	1	2



Bar	Vol in m³/min	Vol out m³/min
1.38	0.034	0.651
2.76	0.054	0.963
4.14	0.074	1.218
5.52	0.093	1.642

per 25mm length

**Material:** Stainless Steel (Grade 304)

**Weight:** 1.52Kg

**Standard Gap:** 0.05-0.10mm

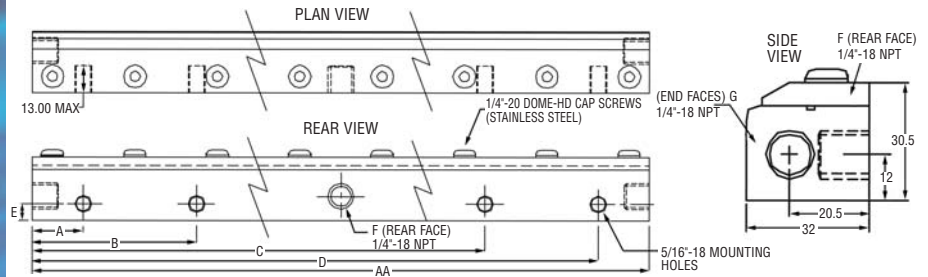
**dB(A) at:** 5.5 bar is 80

**Shims:** Not Applicable

**Standard Inlet Threads:** G $\frac{1}{4}$

**Options:**  $\frac{1}{4}$ " NPT  
Please specify on order  $\frac{1}{4}$ " NPTF

## SE450SS STAINLESS STEEL STRIP AIRMOVER



PART NO. (Stainless Steel)	AA	A	B	C	D	E	F # of Rear Inlets	G # of Side Inlets
Model SE450SS	18" 457mm	1.3" 33.5mm	5.8" 148.5mm	12.1" 308.5mm	16.7" 423.5mm	0.3" 8mm	2	2

**Material:** Stainless Steel (Grade 304)

**Weight:** 2.3Kg

**Standard Gap:** 0.05-0.10mm

**dB(A) at:** 5.5 bar is 80

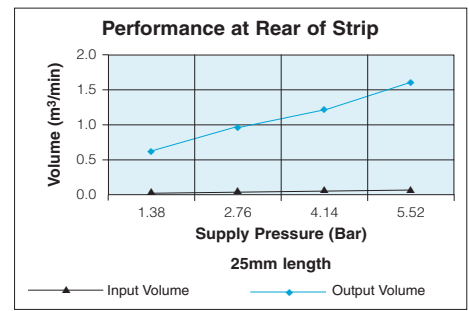
**Shims:** Not Applicable

**Standard Inlet Threads:** G $\frac{1}{4}$

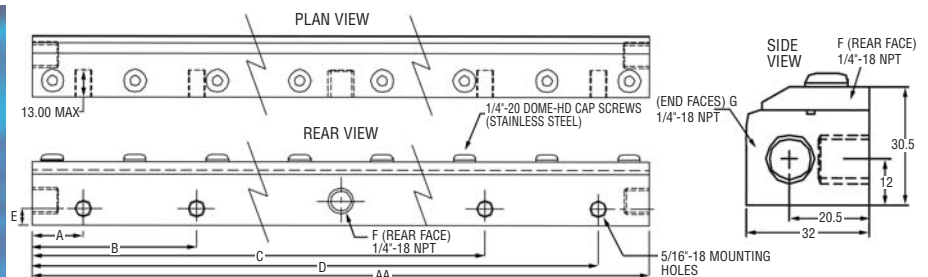
**Options:**  $\frac{1}{4}$ " NPT  
Please specify on order  $\frac{1}{4}$ " NPTF

Bar	Vol in m <sup>3</sup> /min	Vol out m <sup>3</sup> /min
1.38	0.034	0.651
2.76	0.054	0.963
4.14	0.074	1.218
5.52	0.093	1.642

per 25mm length



## SE600SS STAINLESS STEEL STRIP AIRMOVER



PART NO. (Stainless Steel)	AA	A	B	C	D	E	F # of Rear Inlets	G # of Side Inlets
Model SE600SS	24" 609.5mm	1.3" 33.5mm	8.9" 225mm	15.2" 385mm	16.7" 423.5mm	0.3" 8mm	2	2

**Material:** Stainless Steel (Grade 304)

**Weight:** 3.0Kg

**Standard Gap:** 0.05-0.10mm

**dB(A) at:** 5.5 bar is 80

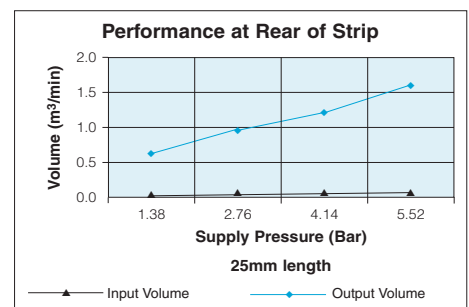
**Shims:** Not Applicable

**Standard Inlet Threads:** G $\frac{1}{4}$

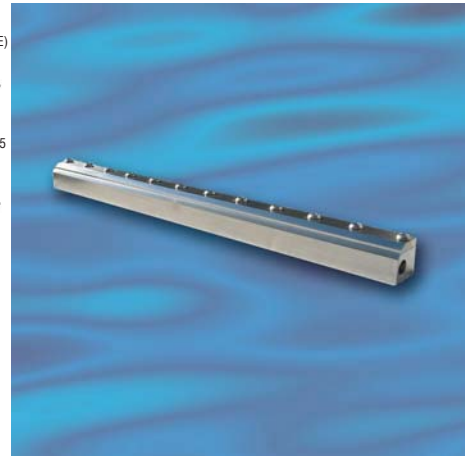
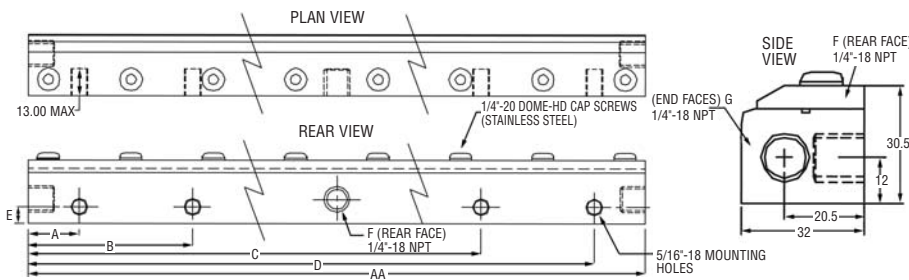
**Options:**  $\frac{1}{4}$ " NPT  
Please specify on order  $\frac{1}{4}$ " NPTF

Bar	Vol in m <sup>3</sup> /min	Vol out m <sup>3</sup> /min
1.38	0.034	0.651
2.76	0.054	0.963
4.14	0.074	1.218
5.52	0.093	1.642

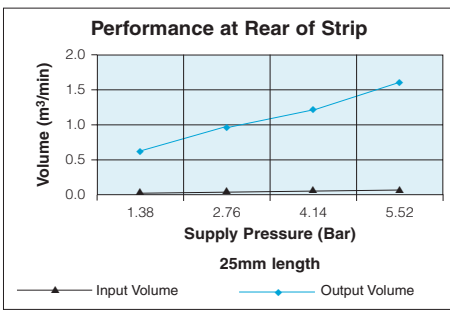
per 25mm length



## STAINLESS STEEL STRIP AIRMOVER SE750SS



PART NO. (Stainless Steel)	AA	A	B	C	D	E	F # of Rear Inlets	G # of Side Inlets
Model SE750SS	30" 761mm	1.4" 35mm	8.9" 227mm	19.1" 485mm	28.6" 727mm	0.3" 8mm	2	2



Bar	Vol in m³/min	Vol out m³/min
1.38	0.034	0.651
2.76	0.054	0.963
4.14	0.074	1.218
5.52	0.093	1.642

per 25mm length

**Material:** Stainless Steel (Grade 304)

**Weight:** 9.0Kg

**Standard Gap:** 0.05-0.10mm

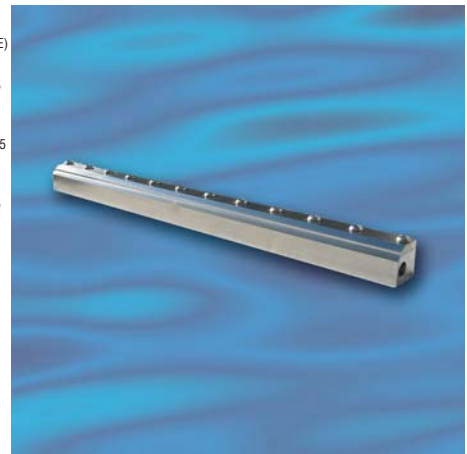
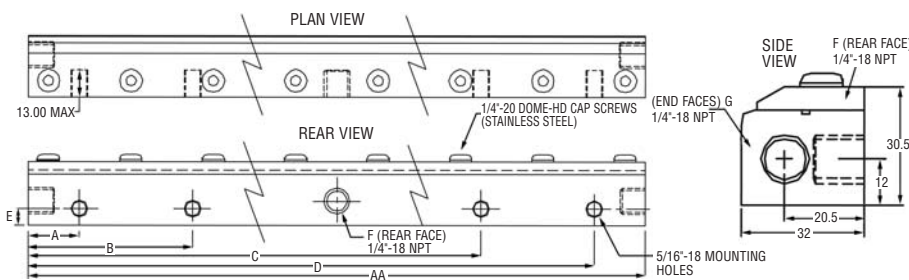
**dB(A) at:** 5.5 bar is 80

**Shims:** Not Applicable

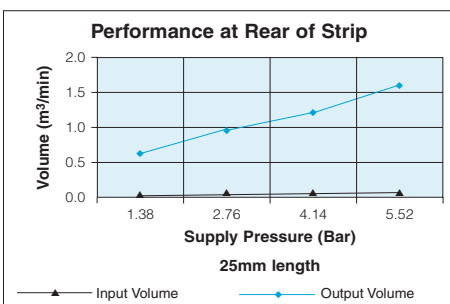
**Standard Inlet Threads:** G $\frac{1}{4}$

**Options:**  $\frac{1}{4}$ " NPT  
Please specify on order  $\frac{1}{4}$ " NPTF

## STAINLESS STEEL STRIP AIRMOVER SE900SS



PART NO. (Stainless Steel)	AA	A	B	C	D	E	F # of Rear Inlets	G # of Side Inlets
Model SE900SS	36" 914mm	1.4" 35mm	10.9" 277mm	26.9" 683.5mm	34.6" 879mm	0.3" 8mm	2	2



Bar	Vol in m³/min	Vol out m³/min
1.38	0.034	0.651
2.76	0.054	0.963
4.14	0.074	1.218
5.52	0.093	1.642

per 25mm length

**Material:** Stainless Steel (Grade 304)

**Weight:** 10.7Kg

**Standard Gap:** 0.05-0.10mm

**dB(A) at:** 5.5 bar is 80

**Shims:** Not Applicable

**Standard Inlet Threads:** G $\frac{1}{4}$

**Options:**  $\frac{1}{4}$ " NPT  
Please specify on order  $\frac{1}{4}$ " NPTF