

Single Flanged 'I' Beam & Channel Wheels - Flat Tread



Brauer has added a flat version to its popular "I" beam and channel radiused tread and wheel range. The new steel, **flat tread**, single flanged range is designed to suit parallel flanged channels and universal beams (to BS4, Part I 1993). The axles have been significantly upgraded to increase the load carrying capacity of the assembly.

MATERIAL: Steel to BS970: Part 1: 1983: 080M40

OPERATING TEMPERATURE RANGE:
-30°C to 120°C.

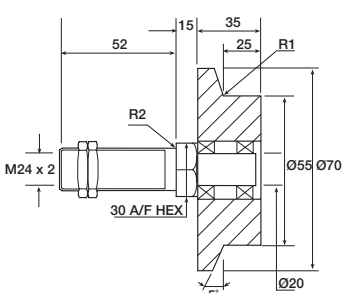
When shock loadings are to be withstood the 'maximum load rating' should be reduced by multiplying by a shock loading factor of 0.65.

SINGLE FLANGED 'I' BEAM & CHANNEL

PART NUMBER:
SSFF55/25/BJA

Maximum load rating:
370Kg

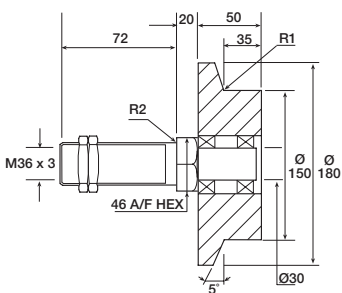
See pages 23-26 for load factors
Approximate weight: 1.1Kg



PART NUMBER:
SSFF150/35/BJA

Maximum load rating:
1500Kg

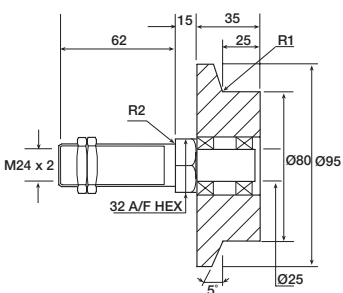
See pages 23-26 for load factors
Approximate weight: 7.5Kg



PART NUMBER:
SSFF80/25/BJA

Maximum load rating:
700Kg

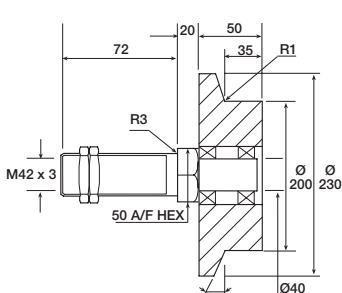
See pages 23-26 for load factors
Approximate weight: 2Kg



PART NUMBER:
SSFF200/35/BJA

Maximum load rating:
2000Kg

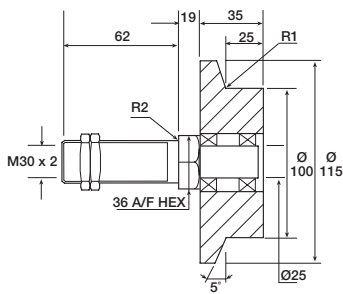
See pages 23-26 for load factors
Approximate weight: 12Kg



PART NUMBER:
SSFF100/25/BJA

Maximum load rating:
1000Kg

See pages 23-26 for load factors
Approximate weight: 4Kg



Single Flanged 'I' Beam & Channel Wheels - Radius Tread



The SFR (cast iron) and SSFR (Steel) ranges of wheel assemblies have been designed to fit within standard sections of channel and 'I' beams. The radiused tread accommodates the angle of the section and improves the wear and tracking characteristics.

MATERIAL: SFR series – Cast iron to BS1452: 1977: Grade 200
 SSFR series – Steel to BS970: Part 1: 1983: 080M40
 Axles – Steel to BS970: Part 1: 1983: 606M36 or 605M36

OPERATING TEMPERATURE RANGE:
 -30°C to 120°C.

SFR (cast iron) wheels are not suitable where substantial shock loads are to be withstood, and they have a limited service life in comparison with the equivalent SSFR wheel.

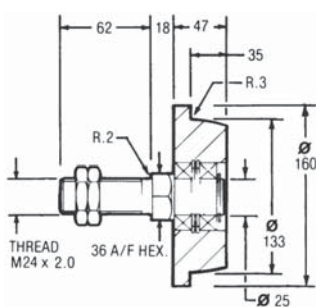
When shock loadings are to be withstood by either the SFR or SSFR ranges the 'maximum load rating' should be reduced by multiplying by a shock loading factor of 0.65.

SFR CAST-IRON SERIES

PART NUMBER:
SFR133/35/BJA

Maximum load rating:
600Kg

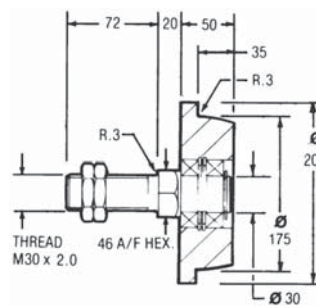
See pages 23-26 for load factors
Approximate weight: 5Kg



PART NUMBER:
SFR175/35/BJA

Maximum load rating:
800Kg

See pages 23-26 for load factors
Approximate weight: 8Kg

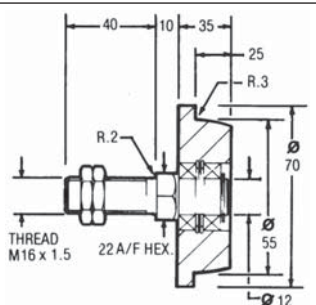


SSFR STEEL SERIES

PART NUMBER:
SSFR55/25/BJA

Maximum load rating:
160Kg

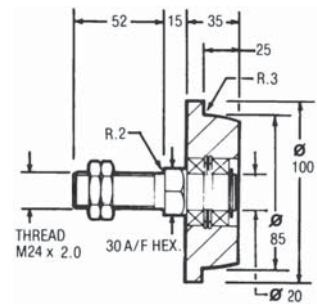
See pages 23-26 for load factors
Approximate weight: 1Kg



PART NUMBER:
SSFR85/25/BJA

Maximum load rating:
370Kg

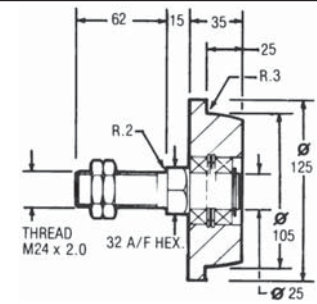
See pages 23-26 for load factors
Approximate weight: 2.5Kg



PART NUMBER:
SSFR105/25/BJA

Maximum load rating:
700Kg

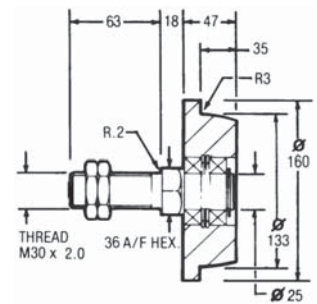
See pages 23-26 for load factors
Approximate weight: 4kg



PART NUMBER:
SSFR133/35/BJA

Maximum load rating:
1000Kg

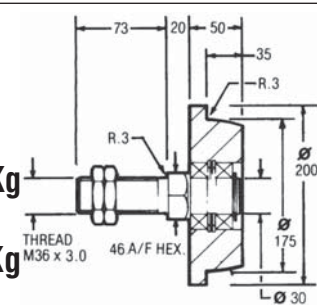
See pages 23-26 for load factors
Approximate weight: 7Kg



PART NUMBER:
SSFR175/35/BJA

Maximum load rating:
1500Kg

See pages 23-26 for load factors
Approximate weight: 11.5Kg



SINGLE FLANGED 'I' BEAM & CHANNEL