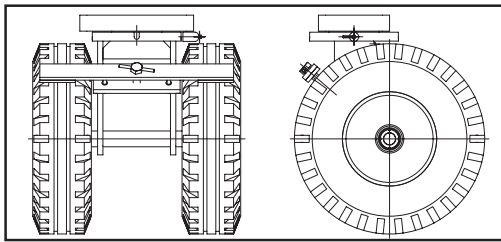


# Pneumatic Tyred Castor Twin Wheel

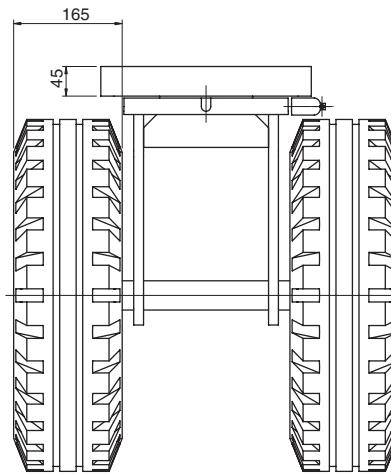
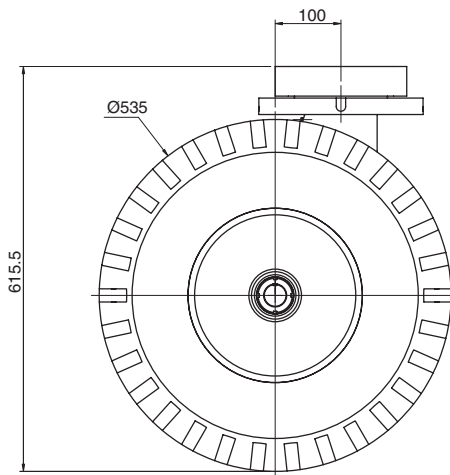
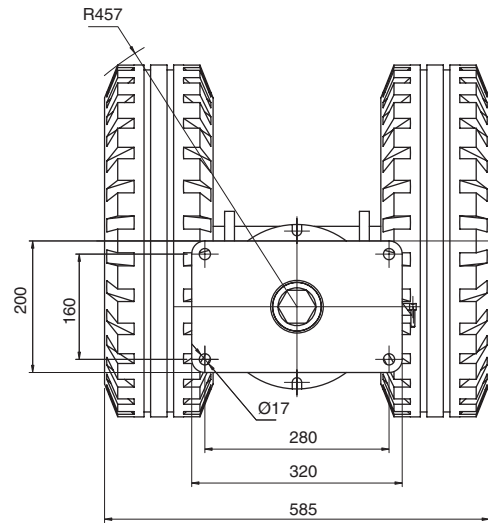
- High speed applications (up to 10Kph)
- Multi-terrain operation capability
- Option for bespoke applications
- Incorporates reliability of TQZ swivel mechanism
- Brauer build quality assured
- Often adapted for towing applications



This new product further enhances the range of castors offered by Brauer designed to meet applications which have high load and speed requirements, such as freight handling and cargo dollies. The swivel and horn plates utilise our tried and tested TQZ castor range to give a reliable product with durability and strength.



WHEEL FACE BRAKE OPTION - SUFFIX 'WFB'



PNEUMATIC TYRED TWIN WHEEL

A	B	C	D			▽ Swivel	▽ Fixed		
Wheel Diameter	Overall Height	Swivel Radius	Tread Width	Max Load Rating	Wheel Bearing Type	PART NUMBER	Approx Weight kg	PART NUMBER	Approx Weight kg
535	615.5	457	165	4200	Ball Journal	TQZS/PN535/165BJ	70	TQZF/PN535/165BJ	60