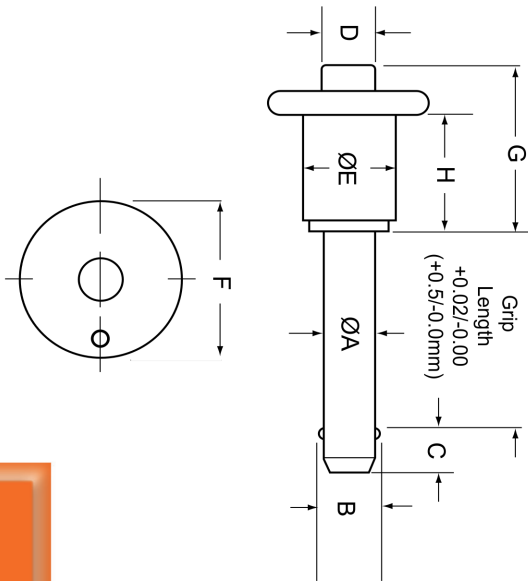


Location Pins



- The Button Handle Kwik-Lok® Pin is ideal for applications that have limited space around the handle.
- Light weight black anodized aluminum handle with blue anodized aluminum button.
- Pin body available in:
Heat Treated 17-4 PH Stainless Steel.
- Includes hole and split ring for easy attachment of optional lanyard.

Button Handle Specifications – Inch

Nom Pin Dia	ØA		±0.005 B	+0.00/-0.04 C	D	E	F	G	H
	Min	Max							
3/16 (#10)	.1870	.1885	.220	.260	1/4	7/16	13/16	13/16	5/8
1/4	.2470	.2485	.289	.290	1/4	7/16	13/16	7/8	5/8
5/16	.3095	.3110	.375	.330	1/4	7/16	7/8	29/32	5/8
3/8	.3720	.3735	.440	.365	5/16	9/16	1 1/8	1 1/32	3/4
7/16	.4345	.4360	.509	.380	5/16	9/16	1 1/8	1 3/32	3/4
1/2	.4970	.4985	.594	.460	7/16	23/32	1 3/8	1 3/16	13/16
9/16	.5595	.5610	.666	.510	7/16	23/32	1 3/8	1 3/8	1
5/8	.6220	.6235	.750	.580	37/64	27/32	1 5/8	1 1/2	1 1/16
3/4	.7470	.7485	.887	.670	37/64	15/16	1 7/8	1 21/32	1 5/32
7/8	.8720	.8735	1.046	.760	3/4	1 1/8	2 3/16	1 31/32	1 1/2
1	.9970	.9985	1.219	.890	3/4	1 3/16	2 3/16	2 1/8	1 1/2

Button Handle Specifications – Metric

Nom Pin Dia	ØA		±0.13 B	+0.0/-1.0 C	D	E	F	G	H
	Min	Max							
5	4.92	4.96	5.54	6	6.4	11.1	20.6	20.6	15.9
6	5.92	5.96	6.99	7	6.4	11.1	20.6	22.2	15.9
8	7.92	7.96	9.42	8	6.4	11.1	22.2	23.0	15.9
10	9.92	9.96	11.86	9	7.9	14.3	28.6	27.8	19.1
12	11.92	11.96	14.45	10	11.1	18.3	34.9	34.9	25.4
16	15.92	15.96	19.00	14	14.7	21.4	41.3	38.1	27.0
20	19.92	19.96	24.08	17	14.7	23.8	47.6	42.1	29.4
25	24.92	24.96	30.94	22	19.1	30.2	55.6	54.0	38.1

Dimensions in millimeters

Button Handle – Inch

Pin Dia	Grip Length (inches)											
	0.5	0.75	1	1.25	1.5	1.75	2	2.5	3	4	5	6
Stainless Steel – High Strength Stainless Steel, 17-4 PH heat treated												
3/16	800600	800601	800602	800603	800604	800605	800606	800608	800609	800611	800613	800615
1/4	800616	800617	800618	800619	800620	800621	800622	800624	800625	800627	800629	800631
5/16	800632	800633	800634	800635	800636	800637	800638	800640	800641	800643	800645	800647
3/8	800648	800649	800650	800651	800652	800653	800654	800656	800657	800659	800661	800663
7/16	800664	800665	800666	800667	800668	800669	800670	800672	800673	800675	800677	800679
1/2	800680	800681	800682	800683	800684	800685	800686	800688	800689	800691	800693	800695
9/16	800696	800697	800698	800699	800700	800701	800702	800704	800705	800707	800709	800711
5/8	800712	800713	800714	800715	800716	800717	800718	800720	800721	800723	800725	800727
3/4	800728	800729	800730	800731	800732	800733	800734	800736	800737	800739	800741	800743
7/8	800744	800745	800746	800747	800748	800749	800750	800752	800753	800755	800757	800759
1	800760	800761	800762	800763	800764	800765	800766	800768	800769	800771	800773	800775

Button Handle – Metric

Pin Dia	Grip Length (mm)											
	10	15	20	25	30	40	50	60	70	80	90	100
Stainless Steel – High Strength Stainless Steel, 17-4 PH heat treated												
5	850600	850601	850602	850603	850604	850605	850606	850607	850608	850609	850610	850611
6	850612	850613	850614	850615	850616	850617	850618	850619	850620	850621	850622	850623
8	850624	850625	850626	850627	850628	850629	850630	850631	850632	850633	850634	850635
10	850636	850637	850638	850639	850640	850641	850642	850643	850644	850645	850646	850647
12	850648	850649	850650	850651	850652	850653	850654	850655	850656	850657	850658	850659
16	850660	850661	850662	850663	850664	850665	850666	850667	850668	850669	850670	850671
20	850672	850673	850674	850675	850676	850677	850678	850679	850680	850681	850682	850683
25	850684	850685	850686	850687	850688	850689	850690	850691	850692	850693	850694	850695