

EV95S EXTRACTOR VENTILATOR



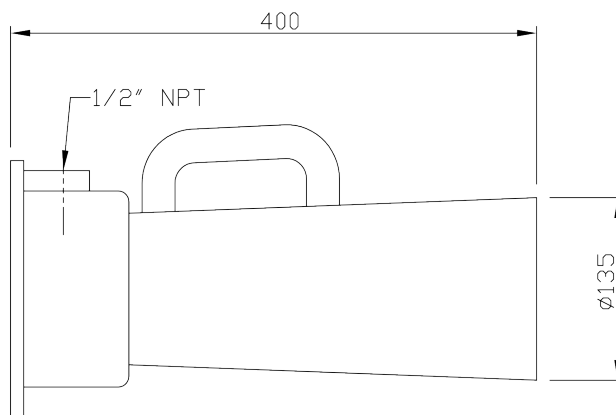
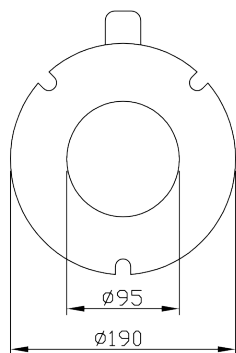
Material: Aluminium/Polyethylene

Weight: 2.0 Kg

dB(A) at: 5.5 bar is 92

Standard Inlet Threads: ½ NPT

Flange: API 3" / 76.2mm



| Press in bar | Vol in m ³ /min | Vol out m ³ /min |
|-----------------|-------------------------------|--------------------------------|
| 2.76 | 0.622 | 22.936 |
| 4.14 | 1.132 | 27.977 |
| 5.52 | 1.642 | 33.413 |

