

VERTICAL CLAMPS

V100 SERIES
MODEL V100/2B



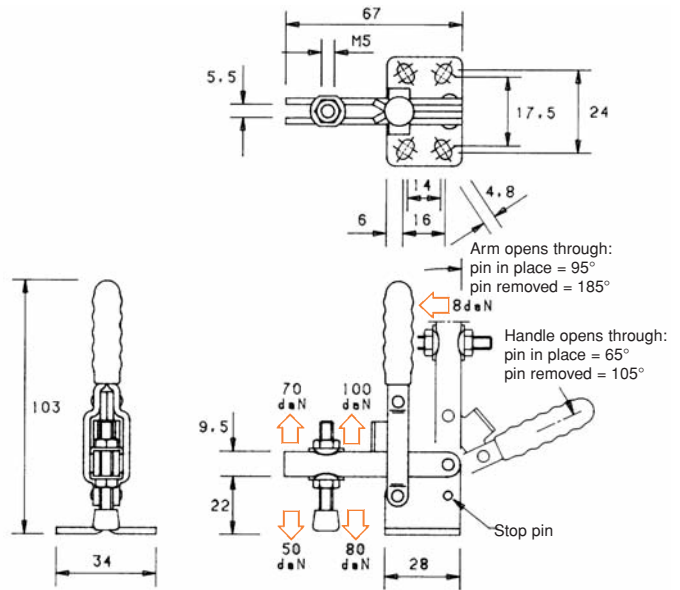
Arm:
The spindle position is adjustable along the arm.

Base:
Flanged.

Nominal Holding Force:
100 daN

Weight:
0.10 Kg

Supplied complete with:
MB0535 Setscrew & nuts.
NC/05 Neoprene cover.
FW05/10 Flanged washers.
See "Accessories" for other items.



V100 SERIES
MODEL V100/2C



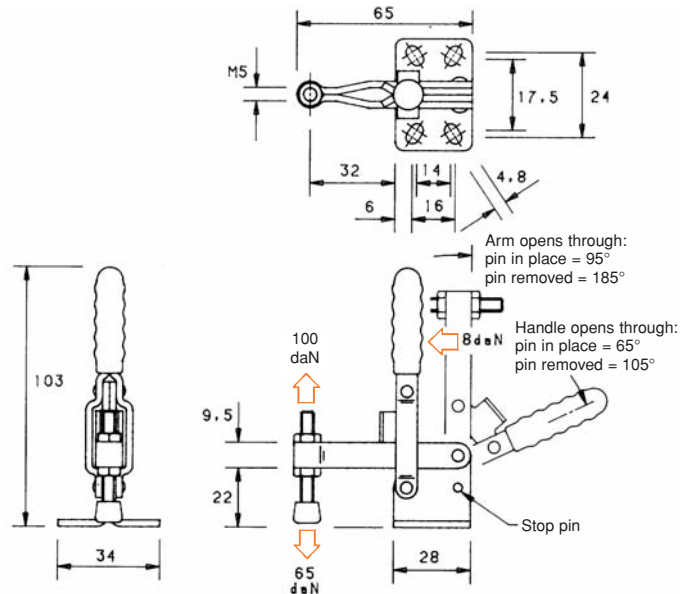
Arm:
The spindle is in a fixed position.

Base:
Flanged.

Nominal Holding Force:
100 daN

Weight:
0.10 Kg

Supplied complete with:
MB0535 Setscrew & nuts.
NC/05 Neoprene cover.
See "Accessories" for other items.



V100 SERIES
MODEL V100/3B



Arm:
The spindle position is adjustable along the arm.

Base:
Front mounting.

Nominal Holding Force:
100 daN

Weight:
0.11 Kg

Supplied complete with:
MB0535 Setscrew & nuts.
NC/05 Neoprene cover.
FW05/10 Flanged washers.
See "Accessories" for other items.

