

HEAVY-DUTY VERTICAL CLAMPS

VA1200 SERIES
MODEL VA1200TP

All dimensions not shown
 remain as per VA1200T



for pneumatic models
 see page 15



for locking mechanism in "open position"
 add suffix (LC) to model number



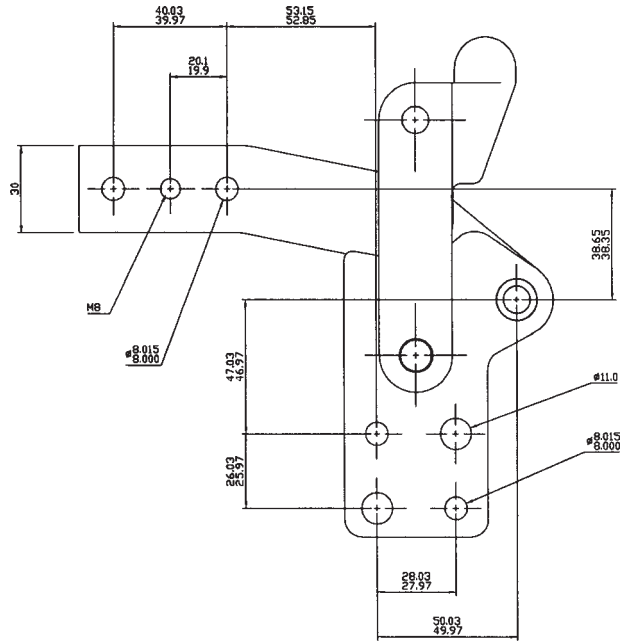
Arm:
 Solid arm with mounting holes.

Base:
 Straight with mounting holes.

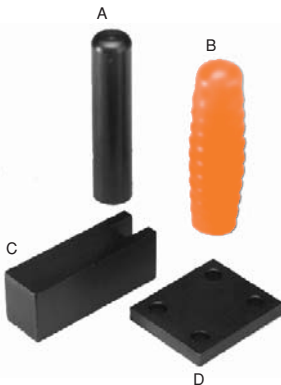
Nominal Holding Force:
 1200 daN

Weight:
 1.87kg

See "Accessories" for other items.



VA1200 SERIES ACCESSORIES



Model A12 Handle: **Weight:**
 For welding at the
 desired angle to
 VA1200S & VA1200T. 0.30 Kg

Model B12 Grip: **Weight:**
 To fit A12 handle. 0.01 Kg

Model C12 Arm: **Weight:**
 For extending the
 stub arms of
 VA1200S & VA1200T. 0.42 Kg

Model D12 Base: **Weight:**
 For bolt mounting
 VA1200S & VA1200T. 0.17 Kg

